

# CAREY COMMERCIAL, INC.

146 Main Street Hyannis, MA 02601  
cecelia@careycommercial.com  
www.careycommercial.com

Voice: 508-790-8900  
Direct: 508-566-2787  
Fax: 508-790-8998



End Unit closest to Airport Road measuring 3,520 SF

Completely Renovated in 2009 with ADA Compliant Features

Three Bathroom, two of which are wheelchair accessible

5 Private Offices

One Large Team Meeting Room

Large Rectangular shaped program or meeting room

Reception Area at Entrance  
General and Private waiting areas

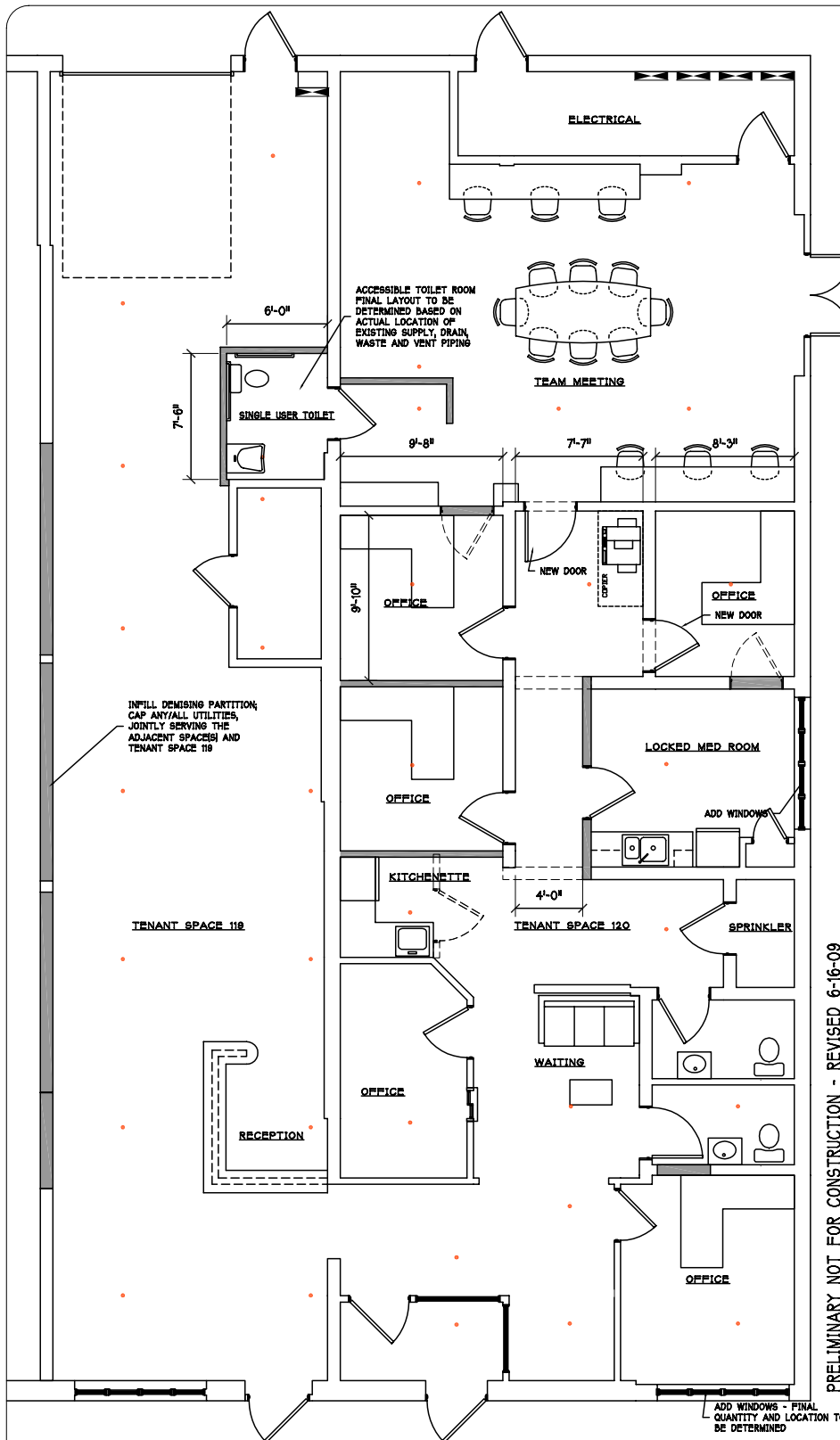
Locked Storage Room

Fire Suppression System

## 3,520 SF Commercial Unit in Business Zone Allowing Alternate Uses Located Behind the K-Mart Plaza



Address: 45 Plant Road #119-120 Hyannis, MA  
Landlord: MJPB Realty Trust  
Total Area: 3,520 SF first Floor Area  
Parking: 80 spaces in lot shared parking lot  
Year Built: 1987. Renovated in 2009  
Utilities: Central Air, Gas FHA, Electric, Alarm System. Town Sewer, Town Water  
Lease Pricing: \$8 PSF + Utilities



SCALE	DATE
DWN BY:	CHKD BY:
JOB NUMBER	

PROJECT INFO:  
**1/8"=1'-0"**  
**45 PLANT ROAD**  
**BARNSTABLE, MA**

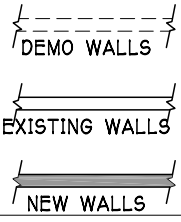
CREATED FOR:  
**vinfen**  
 950 Cambridge Street  
 Cambridge, MA 02141  
 Tel 1-877-2VINFEN  
 Fax 1-617-441-1858

PRELIMINARY NOT FOR CONSTRUCTION - REVISED 6-16-09

CREATED BY:  
**CURRIE DESIGN**  
 9 Hilltop Circle Medfield, MA 02052  
 781-344-5810 fax 781-344-4074

**1 FLOOR PLAN-PROPOSED**  
 1/8" = 1'-0"

EXISTING SPRINKLER HEAD  
 LOCATIONS ARE APPROX



DATE	DESCRIPTION